



# WHAT GIRLS SAY...

In November 2017, 38 girls from two schools in Southeast Queensland who completed the project survey in October 2017 agreed to participate in focus group discussions with their friends. The girls were asked questions about social media trends. Here's what they had to say.

NOVEMBER 2017



[www.girlssocialmediaproject.com](http://www.girlssocialmediaproject.com)

## FOCUS GROUP DISCUSSIONS

### ...ABOUT YOUTUBE

#### VIDEO CLIP PRIORITIES

funny & entertaining

inspiring & uplifting

genuine & authentic

#### RED FLAGS

fake news

HOT SALE

WEIRD STUFF  
ADVERTISING  
PORNOGRAPHY

You need to close this stuff down straight away

### 4 REASONS TO ♥ YouTube

EASY TO USE

DIFFERENT GENRES

EDUCATIONAL OR FUN

BUILDS CONFIDENCE

### WHAT'S IN

LIFESTYLE BLOGS

BEAUTY BLOGS

FUNNY STUFF

DIY

SLIME

### WHAT'S OUT

UNBOXING VIDEOS

### ...ABOUT INSTAGRAM & SNAPCHAT COMMUNICATING WITH FRIENDS



### ... ABOUT IMAGES

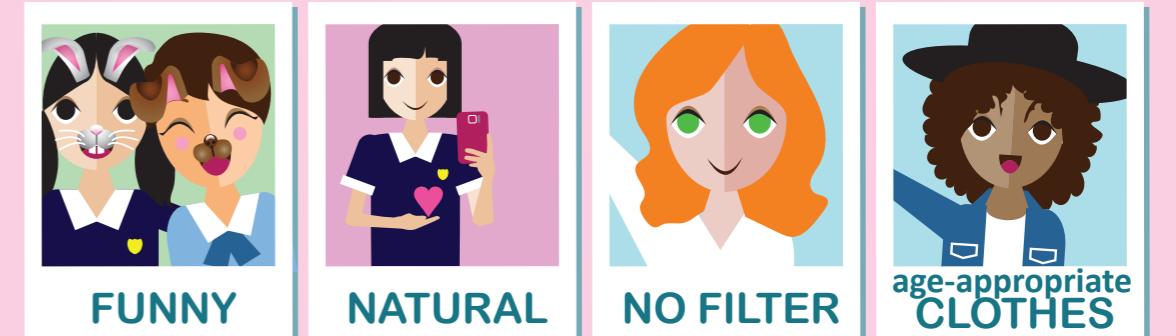
Images most often posted: with friends, on holidays, yummy food, and when they feel good about how they look.



### TYPES OF SELFIES

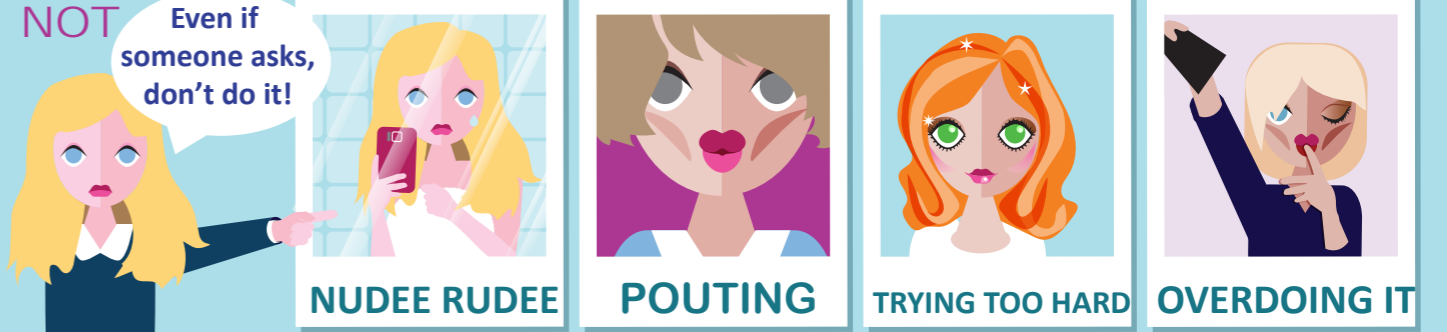


### WHAT'S OKAY



### WHAT'S NOT

Even if someone asks, don't do it!



### INSTAGRAM FAVES



### SNAPCHAT FAVES



### ...ABOUT FACEBOOK



### RED FLAGS

It is a bit creepy and weird if someone you don't talk to keeps a screenshot. Make them delete it.



People Photoshop images and pretend to be your friend. If they ask you things that your friend wouldn't say, tell an adult straight away.

All your followers can see whatever you post, so be careful

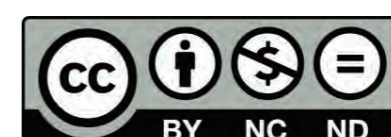


People can look where you are and stalk you so make sure your account is on private.



Deep & meaningful conversations should be done face-to-face because if it's on social media, it's stuck there and that could be awkward.

### ...ABOUT BOYS' SOCIAL MEDIA



©2018 Roberta Thompson  
Designed by Joy Reynolds  
[www.joyreynoldsdesign.com](http://www.joyreynoldsdesign.com)



Project Investigator: Roberta Thompson  
✉ [r.thompson@griffith.edu.au](mailto:r.thompson@griffith.edu.au)  
Griffith Institute for Educational Research  
Griffith University Project Ref No: 2017/568